

SR 161 AIS RECEIVER

One channel receiver



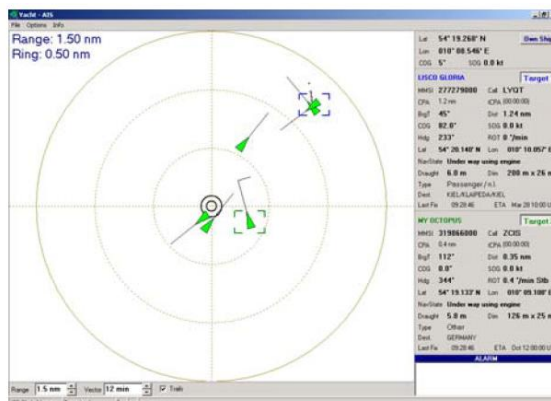
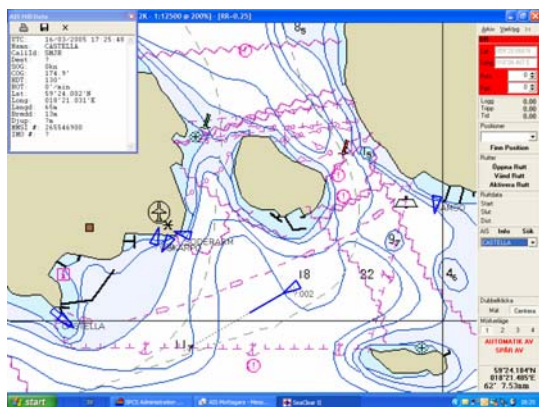
BE A SHIP SPOTTER

- ◆ Markets lowest cost
- ◆ See other ships from land
- ◆ Be updated on movements
- ◆ NMEA compatible
- ◆ Simple connection and setup
- ◆ Changes frequency when disturbed



With the SR 161 AIS RECEIVER you can display any AIS equipped vessel within VHF range on any type of AIS adapted display system. Information transmitted from vessels fitted with AIS Transponders include name, call sign, position, heading, speed, destination, type and size of vessel. The SR 161 AIS RECEIVER is preferably used with your laptop or desktop and a Electronic Chart System or a radar like display. The installation is quick and simple, requiring only the connection to a VHF antenna, and computer (PC). SR 161 AIS RECEIVER is your perfect tool to be updated on ship movements along a coastline or in a port when update rates are not of highest importance. The SR 161 automatically changes frequency if the noise level becomes to high on the channel in use.

Note: In all navigational critical solutions we recommend a two channel solution that can be found in our SR 162, AIS RX YACHT or AIS RX PRO products.



Technical specifications

SR 161 AIS RECEIVER is a compact single channel synthesised VHF receiver designed to receive and decode transmissions from stations fitted with AIS.

Electrical

Power supply range : 9 - 15 Volts DC
 Power consumption : 1.5 W

Data in/output

Bit rate : 38400 b/s (output)
 4800 b/s (input)
 Format : NMEA 0183 ver. 3.0

Receiver

Frequency : AIS 1 or AIS 2
 Sensitivity : -112dBm
 Antenna impedance : 50 ohms

Physical

L x W x H: 115 x 75 x 28 (mm)
 Weight : 300 g

Connector : VHF antenna BNC

Output/input port : 9 pin D-sub socket

THE PERFECT MONITORING SYSTEM TO SPOT SHIPS



True Heading Dealer



Nybergsgatan 6B
 114 45 STOCKHOLM
 SWEDEN
 Phone +46 8 6609060
 Fax +46 8 6618020
 info@trueheading.se



www.trueheading.se